

Wall-mounted


PRODUCT SHEET

KAYF-17 DN4.0 / KAYF-22 DN4.0 / KAYF-28 DN4.0



KI-04 S

Recommended controller

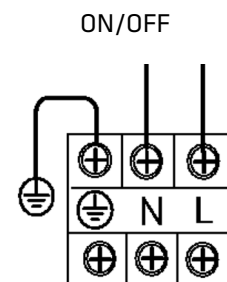
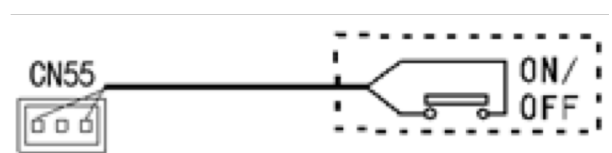
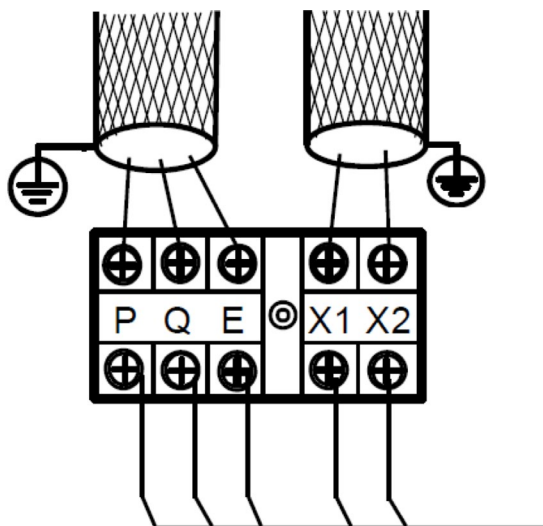
Product certified by: 



FEATURES

Model	KAYF-17 DN4.0	KAYF-22 DN4.0	KAYF-28 DN4.0
Cooling capacity	1,70 kW	2,20 kW	2,80 kW
Heating capacity	2,20 kW	2,40 kW	3,20 kW
Power input	28 W	28 W	28 W
Airflow	356/368/378/385/ 393/402/411 m ³ /h	356/368/380/393/ 402/411/422 m ³ /h	316/338/353/370/ 386/402/417 m ³ /h
Sound pressure	29/29/29/30/ 30/30/31 dB(A)	29/29/29/30/ 30/30/31 dB(A)	29/29/29/30/ 30/30/31 dB(A)
Pipe diameter	Ø1/4" / Ø1/2"	Ø1/4" / Ø1/2"	Ø1/4" / Ø1/2"
Drain tube diameter	Ø16 mm	Ø16 mm	Ø16 mm
Power supply	220-240 V / 1 / 50 Hz		
Max. input	15 A	15 A	15 A
Power wiring	(2+T)x2,50 mm ²	(2+T)x2,50 mm ²	(2+T)x2,50 mm ²
Shielded communication wiring	3x0,75 mm ²	3x0,75 mm ²	3x0,75 mm ²

WIRING DIAGRAM

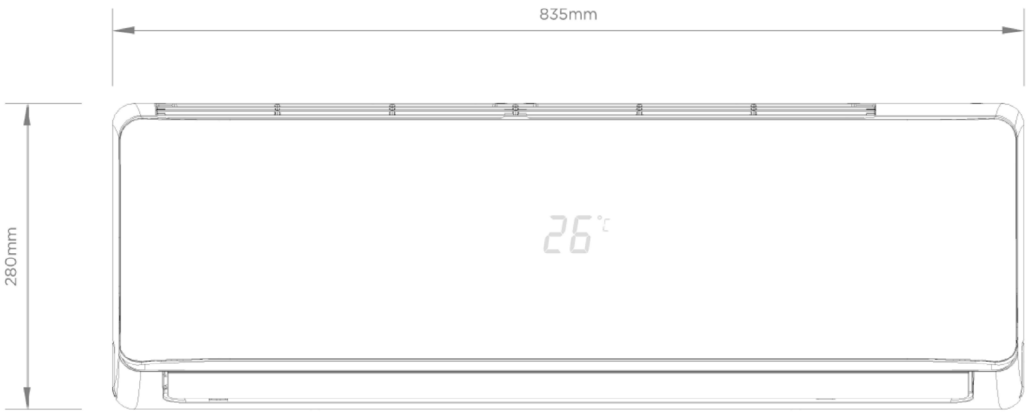
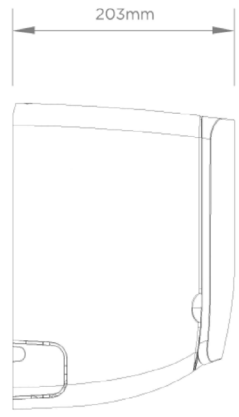


Power supply terminal

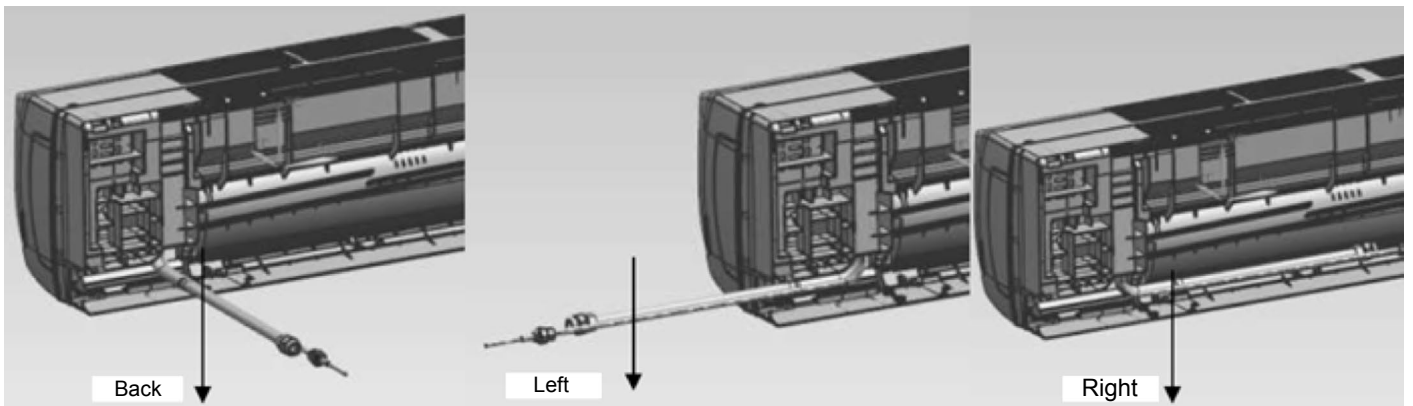
NOTES:

- (1) The data and specifications present in this sheet may vary without notice.
 (2) The images on this sheet are indicative and may be different from the final machine.

DIMENSIONS & WEIGHT

Model	KAYF-17 DN4.0	KAYF-22 DN4.0	KAYF-28 DN4.0
			
Weight	8,40 kg	8,40 kg	9,50 kg

INSTALLATION



Wall-mounted


PRODUCT SHEET

KAYF-36 DN4.0 / KAYF-45 DN4.0 / KAYF-56 DN4.0



KI-04 S

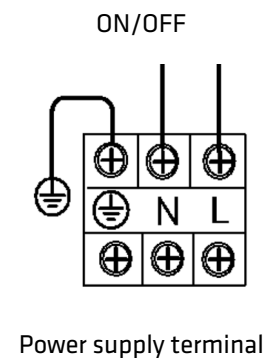
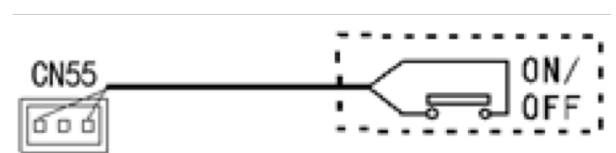
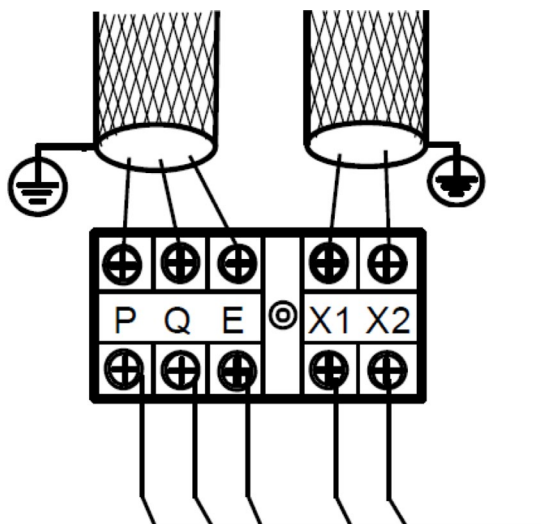
Recommended controller

 Product certified by: 


FEATURES


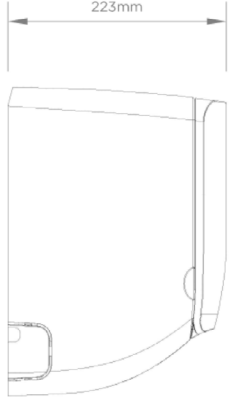
Model	KAYF-36 DN4.0	KAYF-45 DN4.0	KAYF-56 DN4.0
Cooling capacity	3,60 kW	4,50 kW	5,60 kW
Heating capacity	4 kW	5 kW	6,30 kW
Power input	30 W	40 W	45 W
Airflow	488/515/544/573/ 591/628/656 m ³ /h	424/450/478/507/ 535/563/594 m ³ /h	547/578/613/648/ 685/713/747 m ³ /h
Sound pressure	30/30/31/31/ 32/32/33 dB(A)	31/31/32/33/ 33/34/35 dB(A)	34/34/35/36 36/37/38 dB(A)
Pipe diameter	Ø1/4" / Ø1/2"	Ø1/4" / Ø1/2"	Ø3/8" / Ø5/8"
Drain tube diameter	Ø16 mm	Ø16 mm	Ø16 mm
Power supply	220-240 V / 1 / 50 Hz		
Max. input	15 A	15 A	15 A
Power wiring	(2+T)x2,50 mm ²	(2+T)x2,50 mm ²	(2+T)x2,50 mm ²
Shielded communication wiring	3x0,75 mm ²	3x0,75 mm ²	3x0,75 mm ²

WIRING DIAGRAM

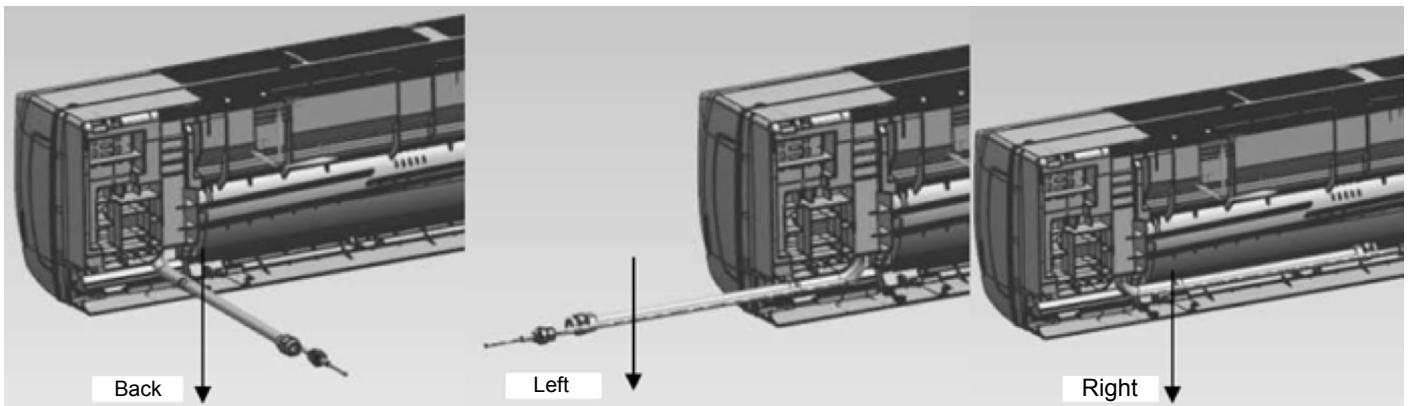


NOTES:
 (1) The data and specifications present in this sheet may vary without notice.
 (2) The images on this sheet are indicative and may be different from the final machine.

DIMENSIONS & WEIGHT

Model	KAYF-36 DN4.0	KAYF-45 DN4.0	KAYF-56 DN4.0
			
Weight	11,40 kg	12,80 kg	12,80 kg

INSTALLATION



Wall-mounted


KAYF-80 DN4.0

PRODUCT SHEET



KI-04 S

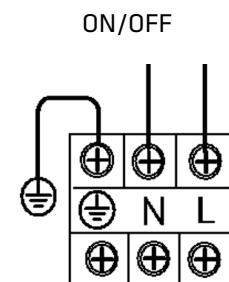
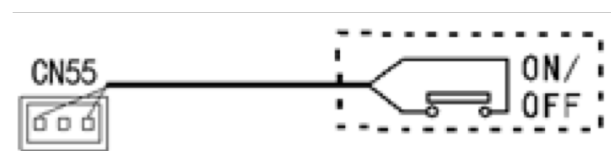
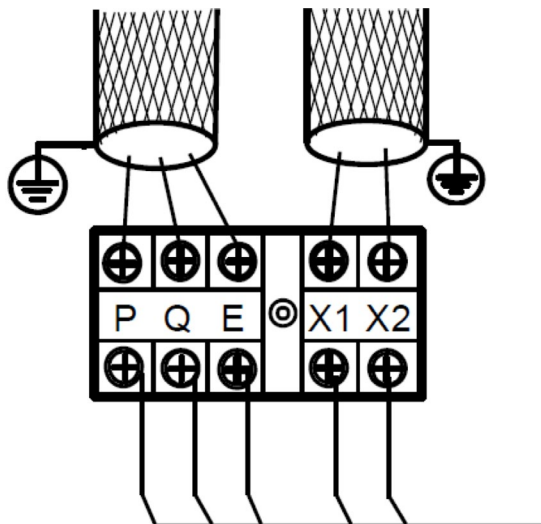
Recommended controller

 Product certified by: 


FEATURES

Model	KAYF-80 DN4.0
Cooling capacity	8 kW
Heating capacity	9 kW
Power input	55 W
Airflow	809/875/940/1.005/1.065/1.130/1.195 m ³ /h
Sound pressure	36/37/38/42/42/43/44 dB(A)
Pipe diameter	Ø3/8" / Ø5/8"
Drain tube diameter	Ø16 mm
Power supply	220-240 V / 1 / 50 Hz
Max. input	15 A
Power wiring	(2+T)x2,50 mm ²
Shielded communication wiring	3x0,75 mm ²

WIRING DIAGRAM



Power supply terminal

NOTES:

- (1) The data and specifications present in this sheet may vary without notice.
- (2) The images on this sheet are indicative and may be different from the final machine.

DIMENSIONS & WEIGHT

Model	KAYF-80 DN4.0
--------------	----------------------



Weight	17 kg
---------------	--------------

INSTALLATION

